

## INQUIRY SHEET OF EMBA

No. 序号	Item name 项目名称	Content provisions 内容规定
1	Inquiry company information 询价公司信息	Company name:EMBA Elektrik Uretim A.S.(Hunutlu Power Plant) 公司名称: EMBA Elektrik Uretim A.S.(Hunutlu Power Plant)
		Address:Şefik Sokak No.5 34330 Levent-Beşiktaş İstanbul 地址: Şefik Sokak No.5 34330 Levent-Beşiktaş İstanbul
		Hunutlu Power Plant Address: Akyuva district, EMBA Cluster House No.1, Yumurtalik, Adana, Turkey 胡努特鲁发电厂地址: Akyuva district, EMBA Cluster House No.1, Yumurtalik, Adana, Turkey
		Phone:05393048147 (Mr. HOU) zhenchaohou@embapower.com 联系电话: 05393048147 【Mr. HOU】 zhenchaohou@embapower.com
2	Inquiry subject 询价主题	<b>Gate support and metal wall panel work</b> <b>闸门支架和金属墙板工程</b>
3	Scope and detailed requirements 范围和详细要求	See Annex 1, Technical Requirements, for details 详见附件1《技术要求》
4	Planned service duration 计划服务期限	Planned start date 01 May 2024, planned end date 15 June 2024 计划开始时间2024年05月01日, 计划结束时间2024年06月15日
5	Location 地点	Turkey Hunutlu Thermal Power Plant(Sugözü District, Yumurtalik City, Adana Province, Turkey);
6	Quotation requirements 报价要求	Currency of quotation is United States dollars and the price is fixed for the duration of the contract 报价货币为美元, 在合同执行期间价格固定不变
		The price shall include the stamp duty required to be paid by both parties to the procurement contract (all to be borne by the contractor and to be paid by the contractor at the relevant tax authorities); 价格应包含采购合同双方需要缴纳的印花税(均由承包人承担, 并由承包人负责去相关税务部门缴纳);
		The quotation includes the full cost of completing the calibration, including but not limited to: design fee for construction drawings, labour cost, material cost, machinery cost, cost of labour protection supplies, accommodation cost, catering cost, transportation cost (horizontal and vertical transportation inside and outside the factory), risk fee, profit, tax, and other full costs; 报价包含完成校准的全部费用, 包括但不限于: 施工图纸设计费、人工费、材料费、机械费、劳动保护用品费用、住宿费、餐饮费、交通费(厂内和厂外的水平、垂直运输)、风险费、利润、税金, 等全部费用;
7	Quotation Deadline 报价截止时间	<b>30 April 2024, by 12 a.m.</b> <b>2024年4月30日, 上午12点之前</b>
8	Quotation method 报价方式	Submission Method: Email Offers; 报价方式: 邮件发送报价; <b>Main send: zhenchaohou@embapower.com</b> <b>Cc: HongDequan@embapower.com</b>
9	Price form 价格形式	Fixed lump-sum price, which is fixed for the duration of the contract, without any additional payment by the employer 固定总价, 合同执行期间价格固定不变, 雇主不额外支付任何其他费用
10	Settlement method 结算方式	Settlement of accounts after completion of services and passing of final acceptance 服务完成, 通过最终验收后, 办理结算
11	Method of payment 支付方式	No advance payment 无预付款
		Completion payments: Upon receipt by the Employer of a VAT invoice from the Contractor that meets the Employer's requirements, payment will be made within 30 working days at 100 per cent of the amount invoiced for Lira, with no quality assurance guarantee 完工款: 雇主收到承包人提供的满足雇主要求的增值税发票后, 30个工作日内按照发票里拉金额的100%支付, 无质量保证金
		The exchange rate for converting USD to Turkish Lira is selected from <b>the buying rate of foreign exchange published on TCMB's website [Indicative Exchange Rates] on the day of the invoice date or the day before the invoice date, and the exchange rate risk is borne by the contractor, so please consider the risk of exchange rate fluctuation in the quotation;</b> 美元折算土耳其里拉的汇率选用发票日期当天或者发票日期前一天, TCMB网站公布的【Indicative Exchange Rates】中的外汇买入汇率, 汇率风险有承包人承担, 请在报价中考虑汇率波动风险;
12	Language 语言	English is the official language of this inquiry, and the companies participating in the quotation declare that they fully understand the contents expressed in English in this inquiry announcement. 英语作为本次询价的正式语言, 参与报价的公司声明充分理解本询价公告中英语所表达的内容
		*The Qualification documents issued by the Turkish government for for carrying out such supply. *由土耳其政府颁发的进行此类供应的资格文件。
		*Business license of enterprise legal person; *企业法人的营业执照;

## INQUIRY SHEET OF EMBA

No. 序号	Item name 项目名称	Content provisions 内容规定
12	Documents to be sent when quoting 报价时需要发送的文件	*Valid and up-to-date Trade Registry Gazette; *有效的和最新的贸易登记公报;
		*Valid and updated Signature Circular; *有效的和更新的签署通知;
		*Valid and up-to-date Tax Certificate; *有效的和最新的税务证书;
		*Other documents if necessary. *如有必要, 还有其他文件。
		*Annex 1 Bill of Quantities (Signature and seal) . *附件1 BOQ (签名和盖章版本)。
<b>Thank you for your cooperation, looking forward to your quotation!</b>		

## Bill of Quantities Quotation

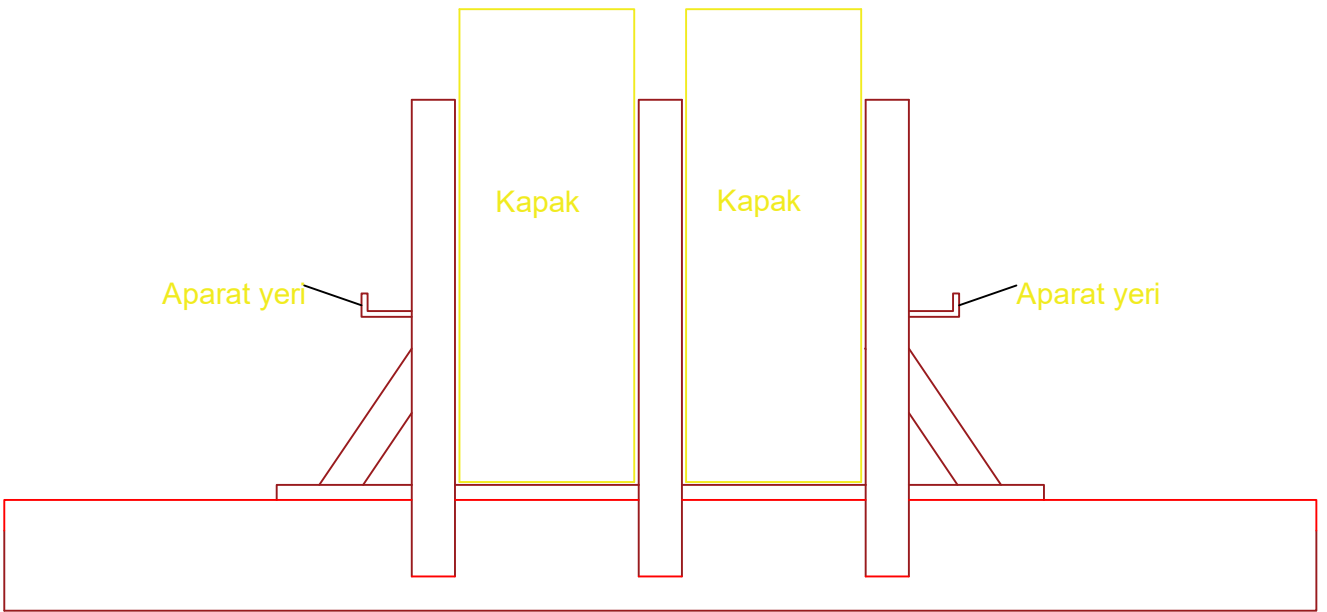
From: EMBA ELEKTRİK ÜRETİM A.Ş.

No.	ITEM	Measurement Content	Unit	Estimate Qty.	UNIT PRICE	TOTAL PRICE	REMARKS
	<b>Steel gate support for return gutter</b> <b>回水沟钢闸门支架</b>						
	<b>施工图纸</b> <b>Construction drawing</b>						
1	施工图纸 Construction drawing	包括但不限于施工图纸设计、出图，设计变更； This includes, but is not limited to, construction drawing design and issuance, and design changes;	项item	1		0.00	
	<b>筏板基础</b> <b>Metal wall panels</b>						
1	筏板基础 Raft slab foundation	包括材料费和施工费用等完成施工图纸中内容的全部费用； Includes all costs to complete the contents of the construction drawings, including material costs and construction costs;	项item	1		0.00	
	<b>钢结构支架</b> <b>Structural Steel Brackets</b>						
1	钢结构支架 Structural Steel Brackets	包括材料费和施工费用等完成施工图纸中内容的全部费用； Includes all costs to complete the contents of the construction drawings, including material costs and construction costs;	项item	1		0.00	
	<b>No. 7 belt tensioner metal wall plate</b> <b>7号皮带拉紧装置金属墙板</b>						
	<b>施工图纸</b> <b>Construction drawing</b>						
1	施工图纸 Construction drawing	包括但不限于金属墙板、檩条、拉杆施工图纸设计、出图； Including, but not limited to, metal wall panels, purlins, and tie rod construction drawing design and drawings;	项item	1		0.00	
	<b>金属墙板</b> <b>Metal wall panels</b>						

## Bill of Quantities Quotation

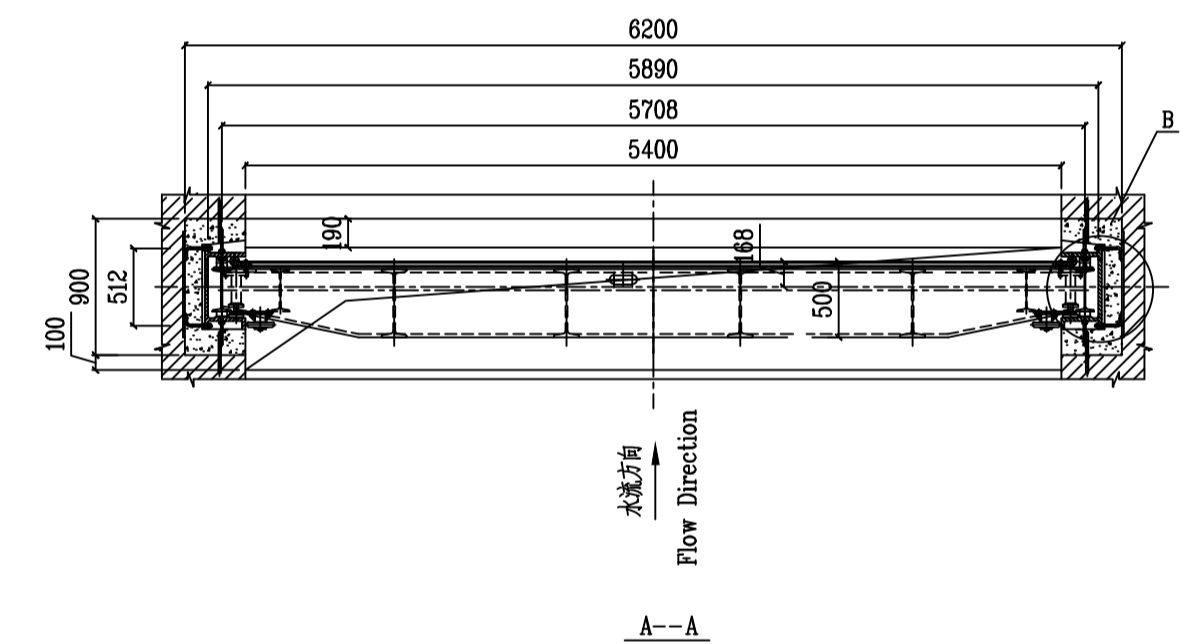
From:EMBA ELEKTRİK ÜRETİM A.Ş.

No.	ITEM	Measurement Content	Unit	Estimate Qty.	UNIT PRICE	TOTAL PRICE	REMARKS
1	金属墙板制作安装 Metal wall panel fabrication and installation	包括金属墙板、檩条、拉杆等施工图纸中包括的所有材料材料费和施工费用 Includes material and construction costs for all materials included in the construction drawings such as metal wall panels, purlins, ties, etc.	m <sup>2</sup>	215		0.00	
	<b>防火门</b> <b>Fireproof door</b>						
1	防火门 (1500*2400mm) Fireproof door (1500*2400mm)	1、耐火极限2小时, 包括防火门的材料费和安装费; 1、 Fire-resistant limit 2 hours, including material cost and installation cost of fireproof door;	项item	2		0.00	
TOTAL(Excluding VAT)						0.00	
VAT TAX (20%)						0.00	
TOTAL(Including VAT)						0.00	



液压钢闸门设计参数表  
Design parameters of hydraulic steel gate

序号 NO	设计参数 Design parameter	单位 Unit	参数 Parameter
1	设计水头 Design head	m	11.0
2	导槽深度 Guide groove depth	m	11.5
3	孔口尺寸(宽×高) Orifice size (width × height)	mm	5400×5800
4	止水结构 Water-proof structure		正向, 橡胶止水 Forward, Rubber Water-proof
5	启闭条件 Open and close condition		静水启闭(水位差不大于300mm) Static water opening and closing (water level difference is no more than 300mm)
6	启闭力 hoisting capacity	KN	220
7	启吊方法 Lifting method		自动抓钩启闭 Open and close with automatic hook
8	液压缸数量 Number of hydraulic cylinders	个 Set	6
9	工作压力 Design pressure	MPa	8
10	液压缸活塞直径 Diameter of Hydraulic cylinder piston	mm	φ63
11	液压泵站配置 Hydraulic pump station configuration		一控一, 8MPa one control one



说明 (Note):

1、本图采用UTM36-3高程系统, 单位以m计, 其余尺寸以mm计。  
In this drawing, UTM36-3 elevation system in m units.  
The remaining dimensions are measured in mm.

REV.	DATE	STATUS	DESCRIPTION	PRPD.	CHKD.	RVWD.	APPRD.
0	19.07	CFC	First Issue				

REVISION

This document is the property of ECEPDI, no part of this document may be reproduced or used without the written permissions of ECEPDI. Violations as such shall be legally accountable.

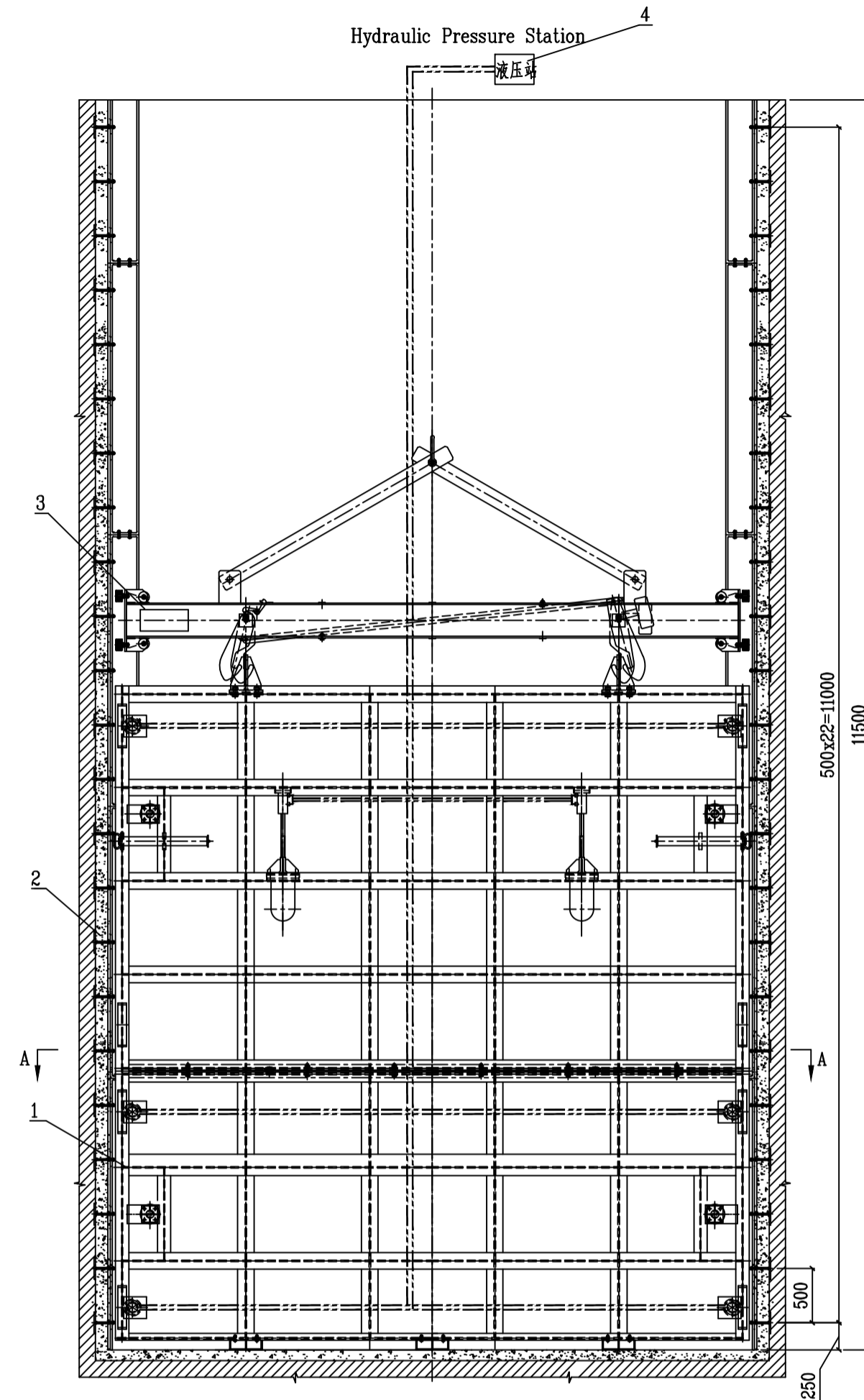
**emba** EMBA Electricity Production Inc.

East China Electric Power Design Institute Co., Ltd.

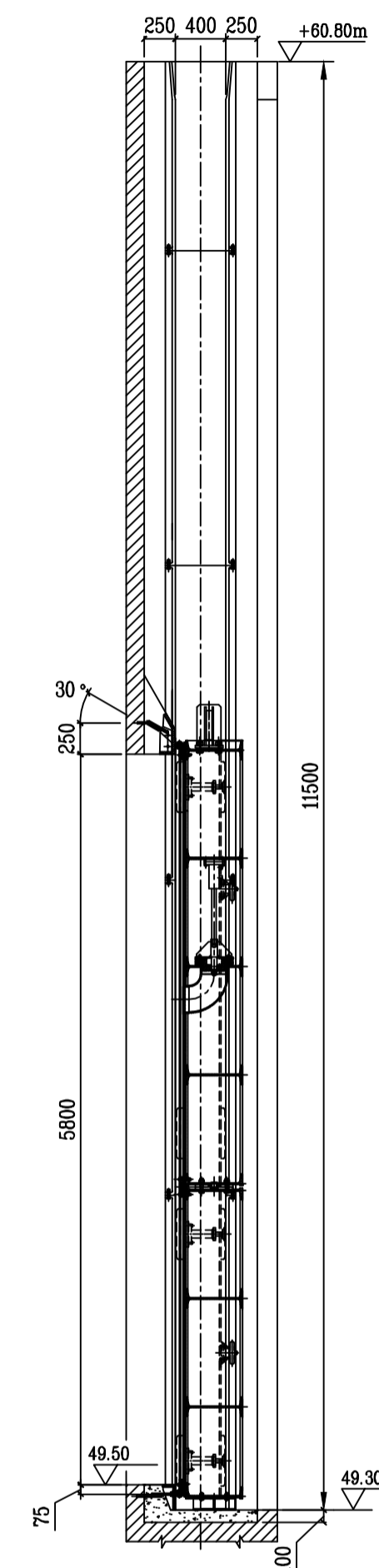
土耳其胡努特鲁燃煤电厂工程  
EMBA HUNUTLU THERMAL POWER PLANT PROJECT

Apprd.	陈云	Dsgd.	陈云
Rvw.		Scale	1:50
		Status	CFC
Chk.	陈云	Date	2019.07
Dwg.No.	F006301S-SG-J-1URD-02-XT-00001		

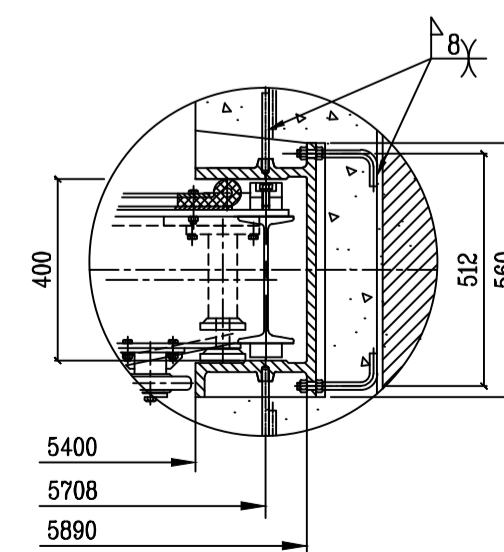
安装图 Installation drawing of hydraulic steel gate	
Rev.	0



闸门主视图  
Main view of Gate



闸门剖面图  
Profile of Gate



B处放大图1:3  
Enlarged drawing in B 1:3

NO 序号	代号 Code	名称 Name	数量 Quantity	备注 Remark
4	M425.4/5.8-Y-00	钢闸门液压系统 Steel gate hydraulic system	1	
3	D405.4-00	自动抓钩 Automatic hook	1	
2	M425.4/11.5-YM-00	钢闸门二次预埋总图 General drawing of steel gate secondary embedded	1	
1	M425.4/5.8-01	钢闸门总图 General drawing of steel gate	1	

## 7号皮带拉紧装置封闭

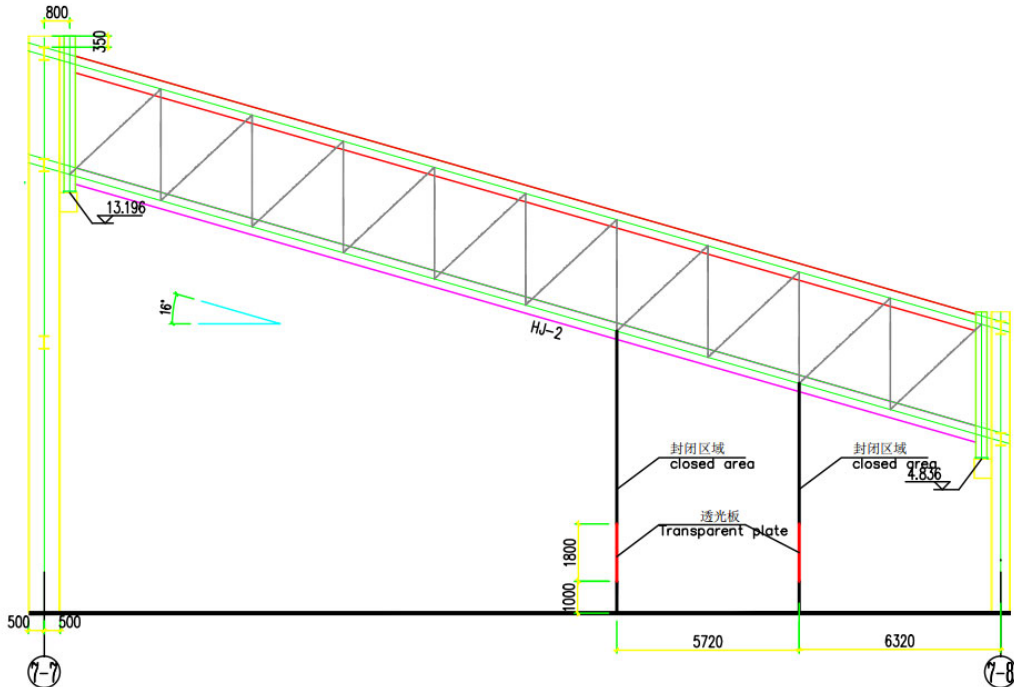
### 7 Nolu Bant Gergi Cihazının Kapatılması

#### 1、概述

#### 1、 Genel Bakış

原设计7号皮带拉紧装置为敞开空间，在皮带运行状态时，皮带上带动煤粉到室外，严重污染周围环境，在下雨期间煤粉随雨水进入雨水系统，不符合环保要求设计，计划对7号皮带拉紧装置采取封闭措施，封闭材料采用0.53mm厚彩钢板，彩钢板支撑体由设计单位设计。

Orjinal tasarımda 7 nolu bant gergi cihazında boşluk alan bulunmaktaydı, bant çalışır durumda iken bant üzerinden dışarıya tozuma oluyor ve ciddi çevre kirlenmesi meydana geliyor, yağmur sezonunda yağmur ile birlikte yağmur suyu sistemine karışıyor, çevre uygunsuzluğu meydana geliyor, bundan dolayı 7 nolu bant gergi cihazını kapatma önlemi planlanıyor, kapatma için kullanılacak malzemeler 0.53 mm kalınlığında renkli sac plaka, sac destekleri proje birimi tarafından projesi yapılmıştır.



7号皮带立面图  
No. 7 belt elevation

## 2、方案

### 2、Plan

7号皮带从地面至皮带结构底部全部采用彩钢板封闭，封闭结构图纸由设计单位设计。

7 nolu bant zeminden bant şasesine kadar olan kısmın tamamını renkli sac plaka ile kapatılması, kapatma yapı çizimleri yine tasarım birimi tarafından tasarlanmıştır.

在南侧布置 2 樘 1500\*2400 钢制防火门。在封闭 1m 高度向上四周布置 1.8m 高透光彩钢板，方便检修及运行人员检查设备状态。

Güney tarafına 2 adet 1500\*2400 çelik yangın kapısı takılacak. 1,8 m yüksekliğinde şeffaf ve parlak plakaları yaklaşık 1 m yüksekliğinde kapalı bir alana yerleştirin, bakım ve işletme personelinin ekipmanın durumunu kontrol etmesini kolaylaştırılması sağlanacaktır.

## 3、设计要求

### 3、Tasarım Gereksinimleri

3.1 设计图纸语言采用土耳其语和英语双语。

Tasarım projesi dili için Türkçe ve İngilizce iki dil kullanılması gerekir.

3.2 设计单位在设计前应到现场实际查看，了解目前状态。

Tasarım birimi tasarım öncesinde sahaya gelip kontrol etmesi ve şuan ki durum hakkında bilgi sahibi olması gerekir.

3.3 彩钢板支撑体系与地面连接做法应明确。

Renkli çelik levha destek sistemi ile zemin arasındaki bağlantı yöntemi net olmalıdır.

3.4 彩钢板支撑体系材料选型因为土耳其易采购材料。

Renkli çelik levha destek sisteminin malzemesini Türkiye'den satın almak daha uygun olacaktır.

3.5 设计结构要考虑最大 17.2-20.7m/s 风速。

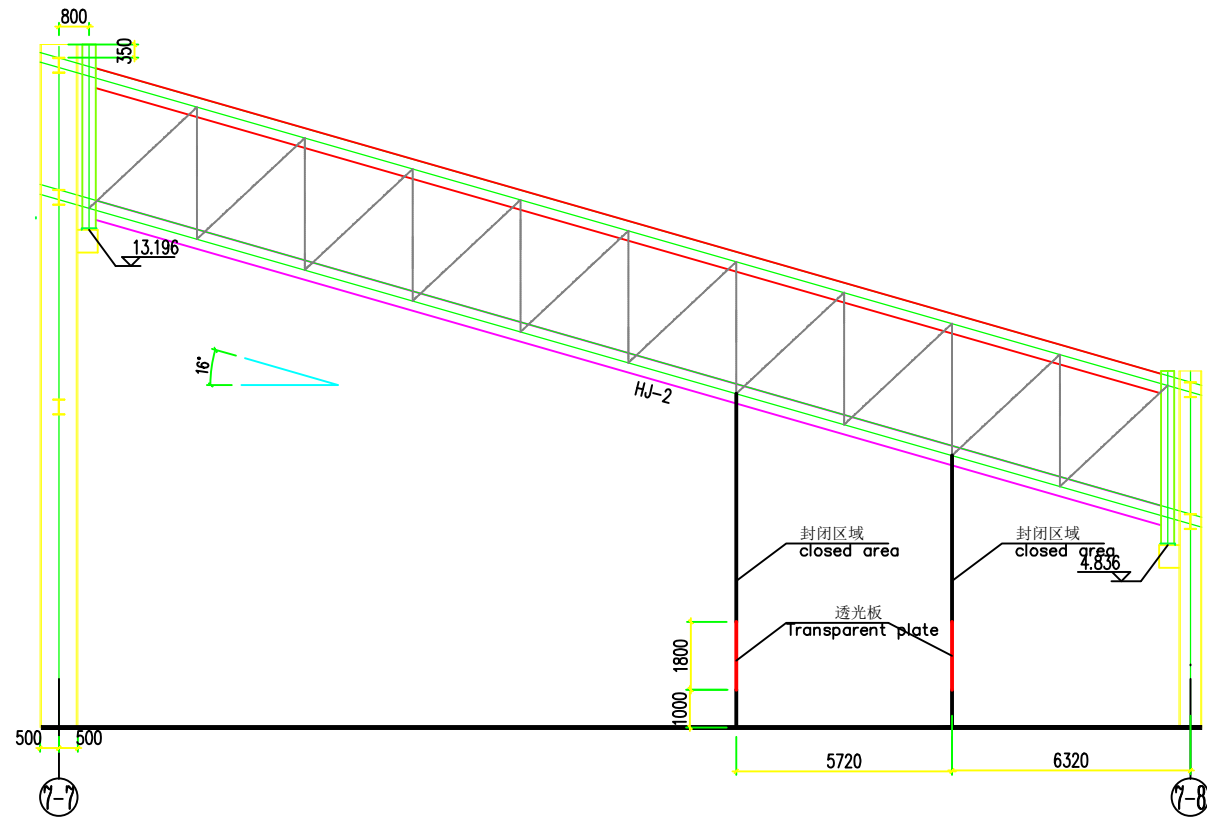
Tasarım yapının max. rüzgar hızının 17.2-20.7m/s göz önünde bulundurulması gerekir.

3.6 设计图纸在经过我公司审核通过后方可出具正式图纸。

Tasarım projesi bizim firmamızda onay prosedürleri yapıldıktan sonra

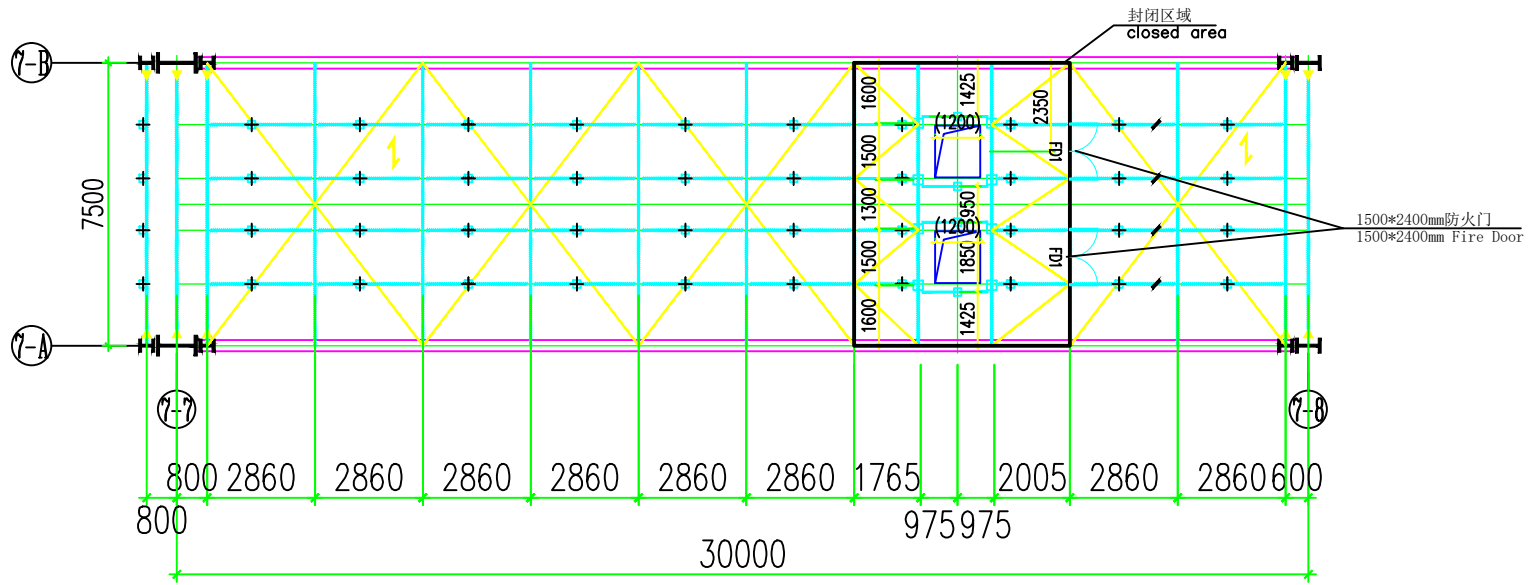


projenin son hali kabul edilmiş olacaktır.



7号皮带立面图  
No. 7 belt elevation

土耳其胡鲁特努发电厂 Türkiye Hurutenu Power Plant			
批准 Approve		7号皮带立面图 No. 7 belt elevation	
审核 Review			
设计 Design			
制图 Drawing		日期 Date	图号 NO



7号皮带平面图  
No. 7 belt plan

土耳其胡鲁特努发电厂 Türkiye Hurutenu Power Plant			
批准 Approve		7号皮带平面图 No. 7 belt plan	
审核 Review			
设计 Design			
制图 Drawing		日期 Date	图号 NO